

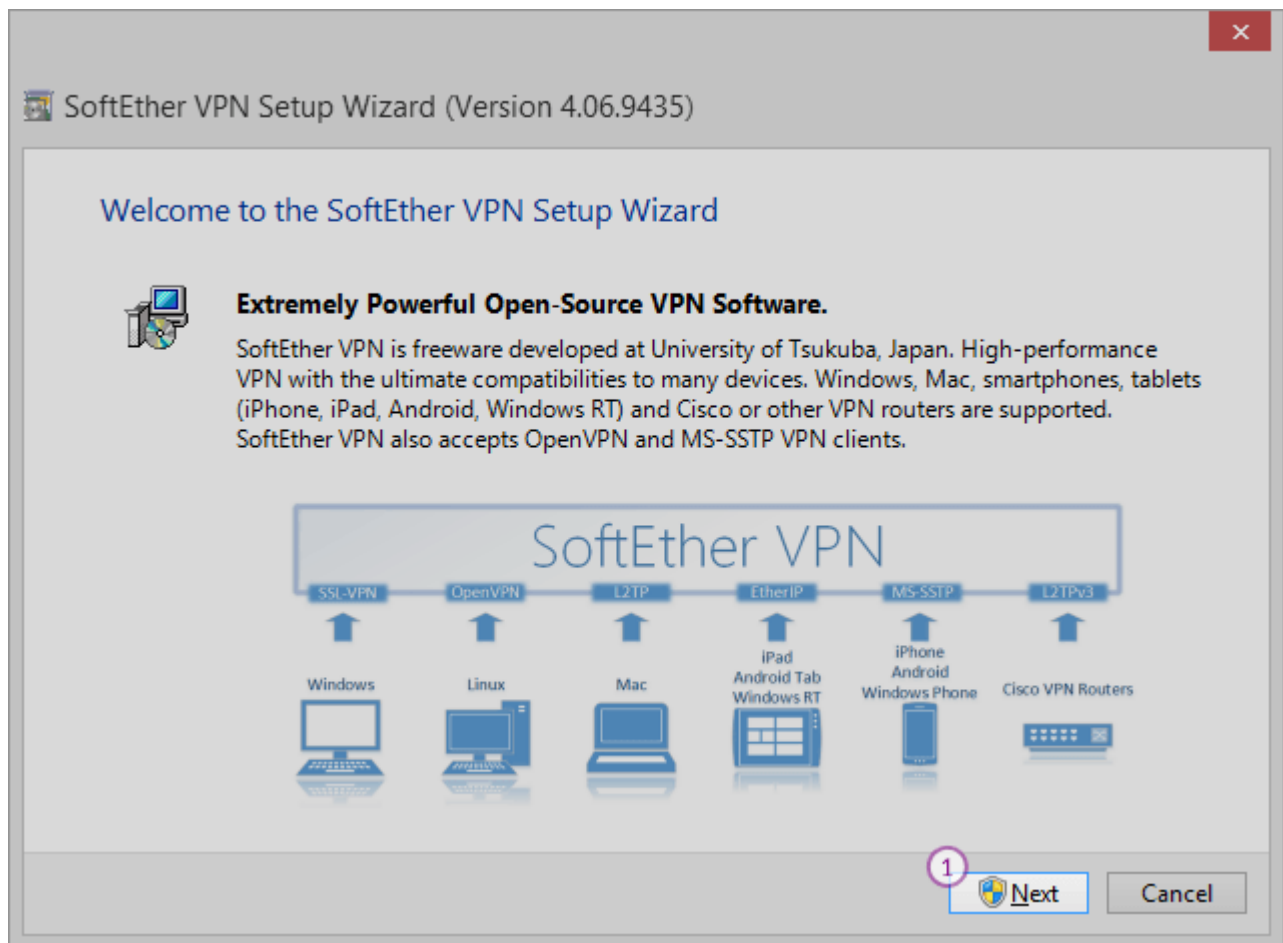
# SoftEther Setup Instructions

SoftEther VPN on Windows works with a the SoftEther app.

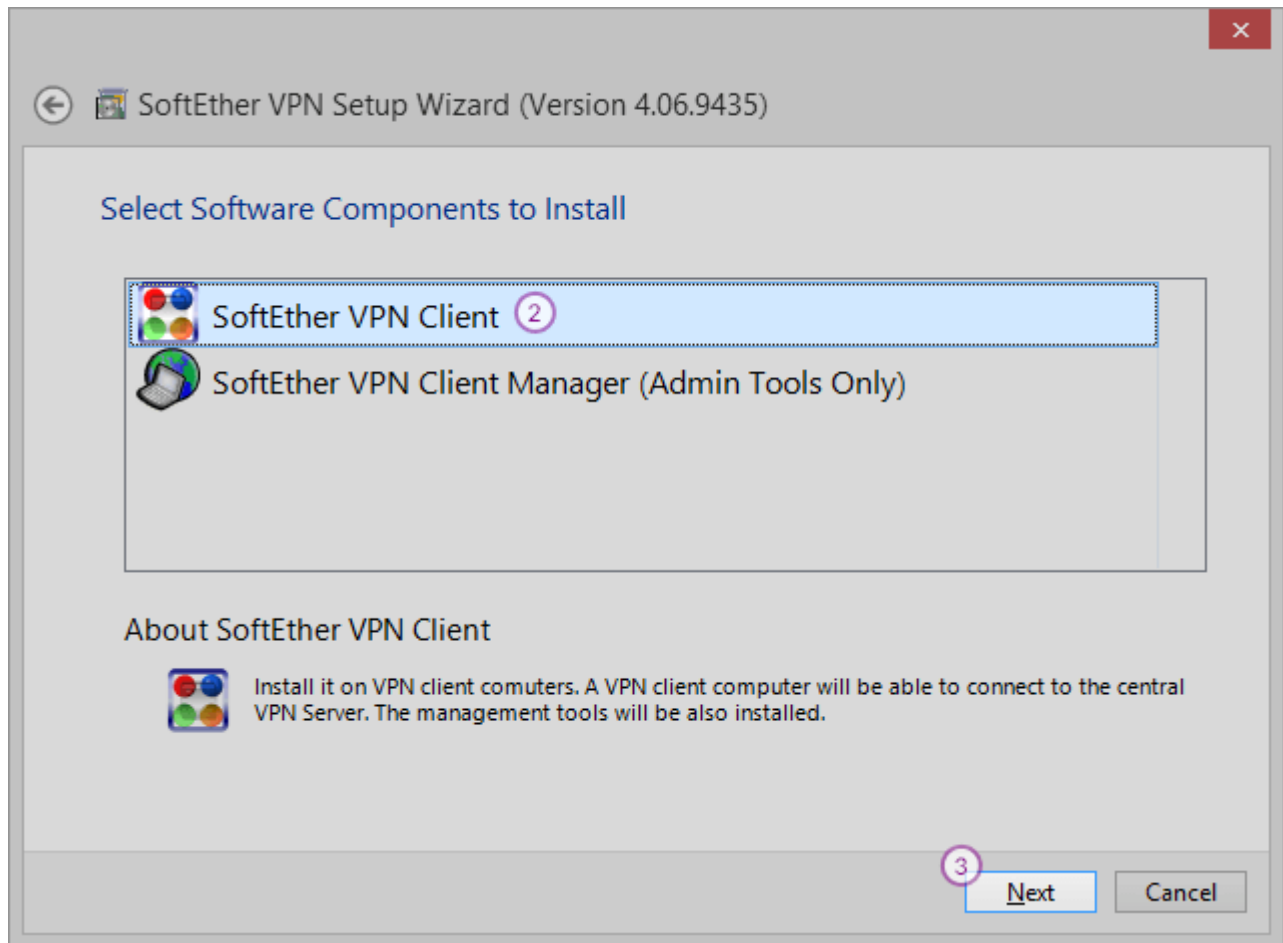
Download SoftEther VPN client for Windows.

<http://vpn.kku.ac.th/manual/vpnclient.zip>

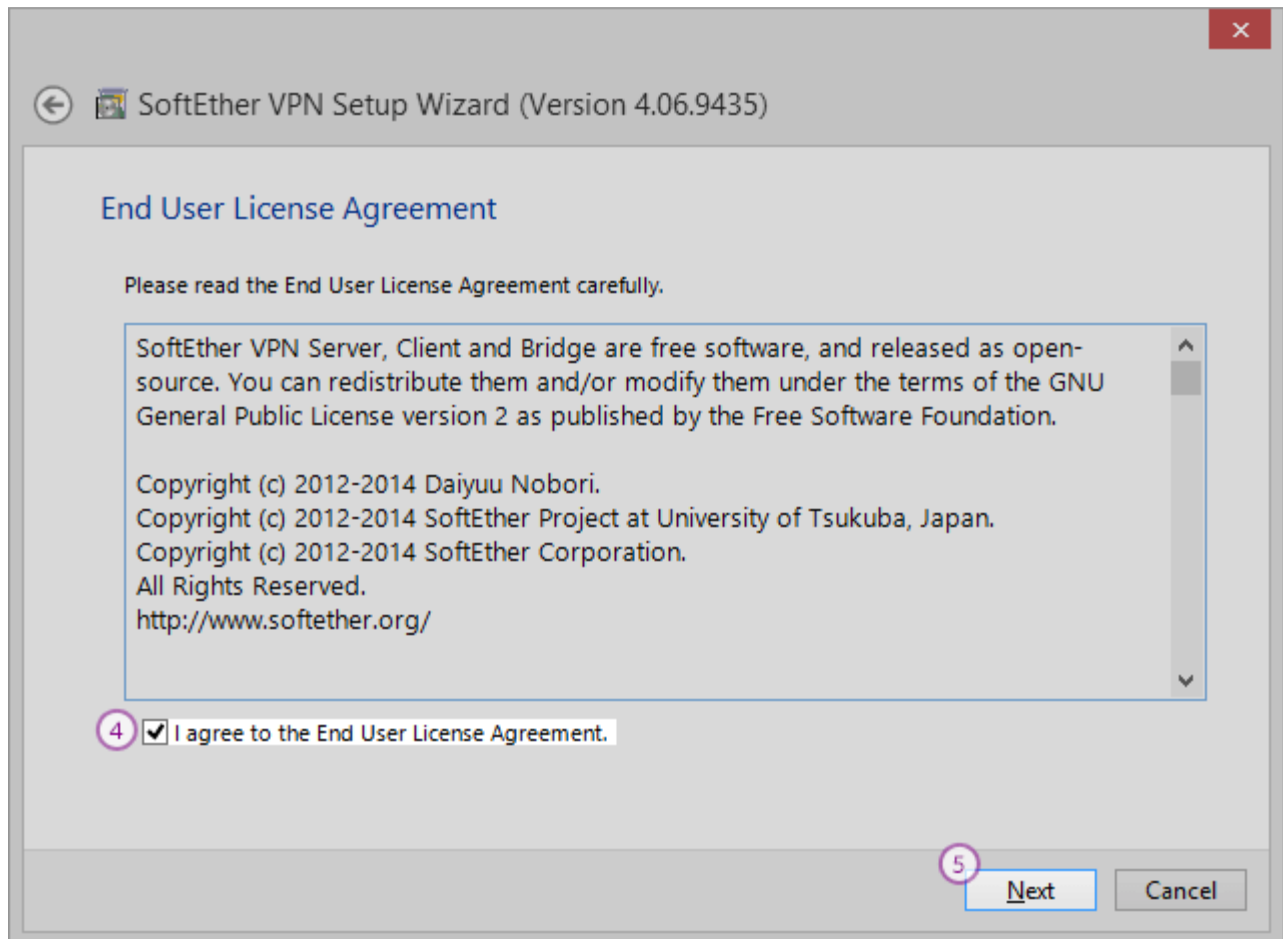
1. Start Installation.
2. Click "Next" (1).



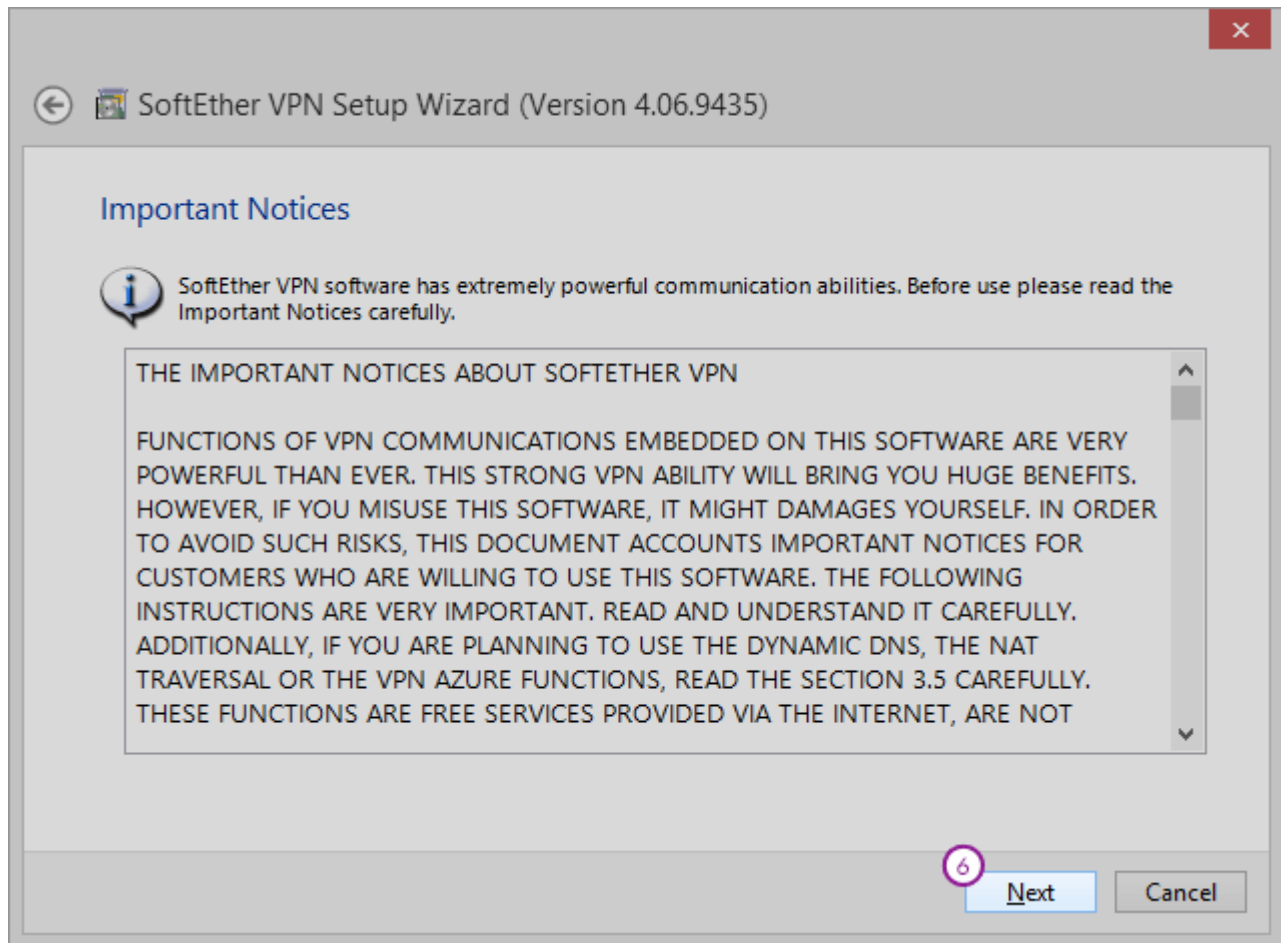
3. Choose "SoftEther VPN Client" (2) and click "Next" (3).



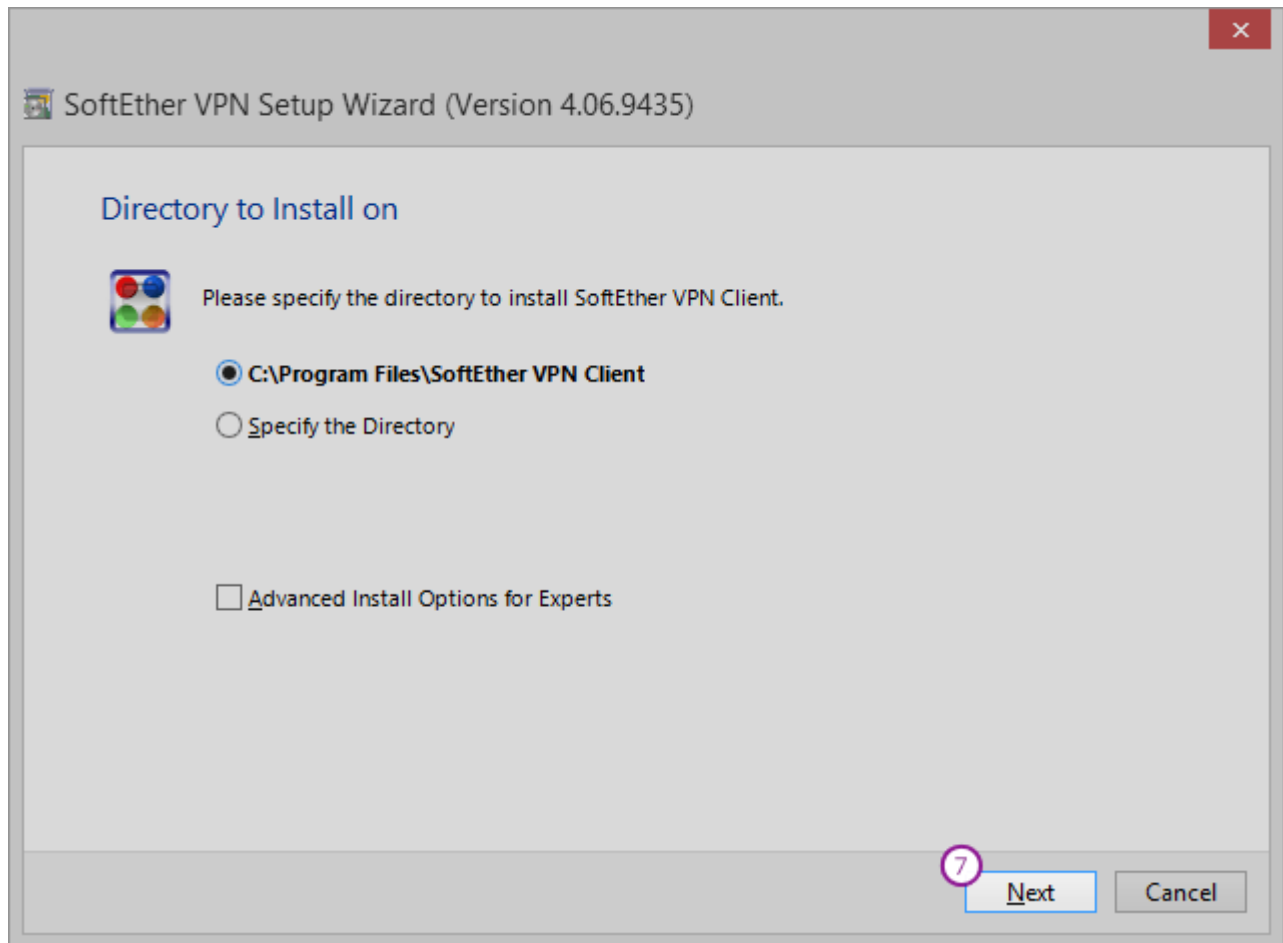
4. To continue install SoftEther VPN on Windows check “I agree to the end user License Agreement” (4) box and click “Next” (5).



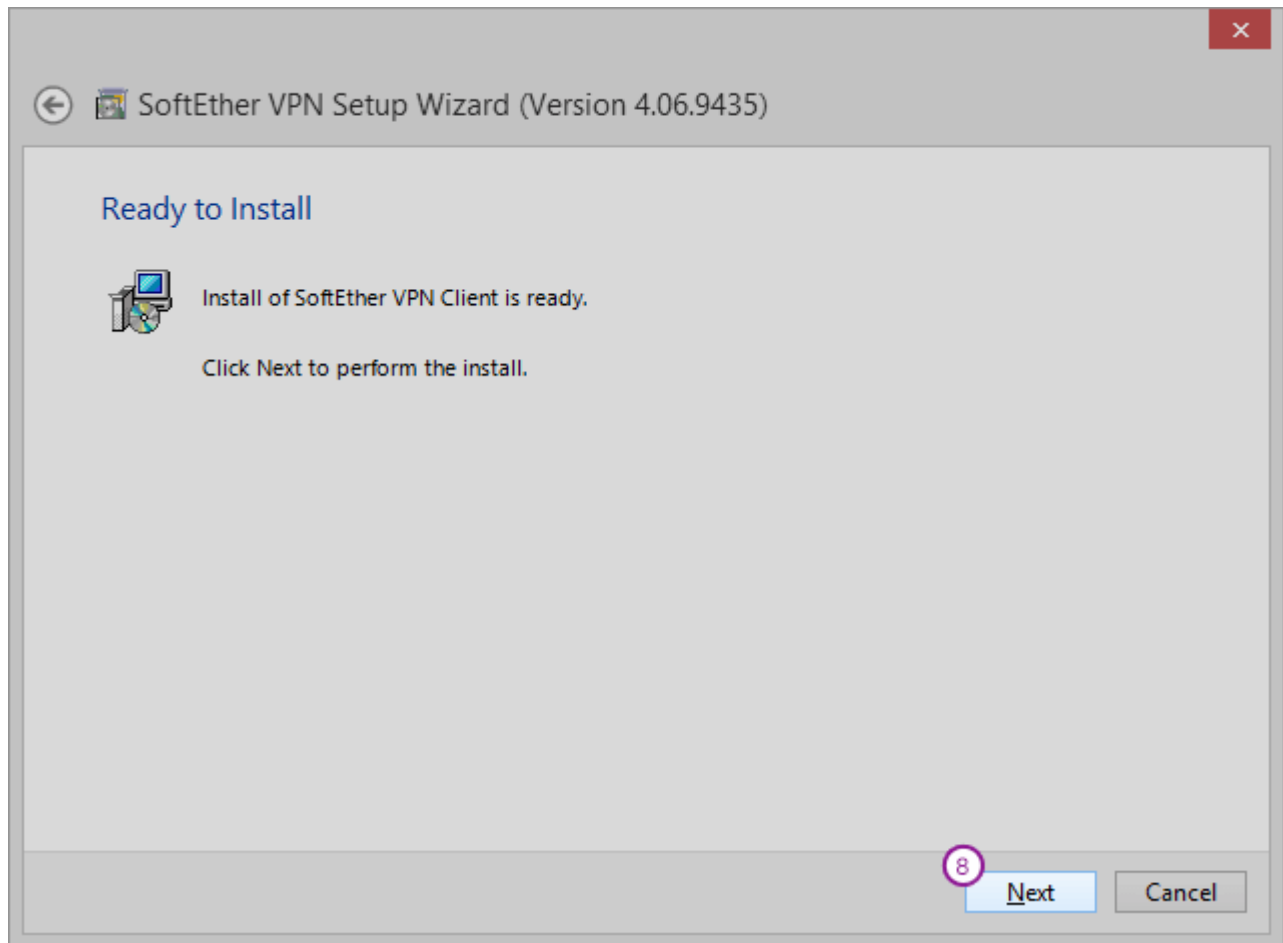
5. On the “Important notice” screen click “Next” (6).



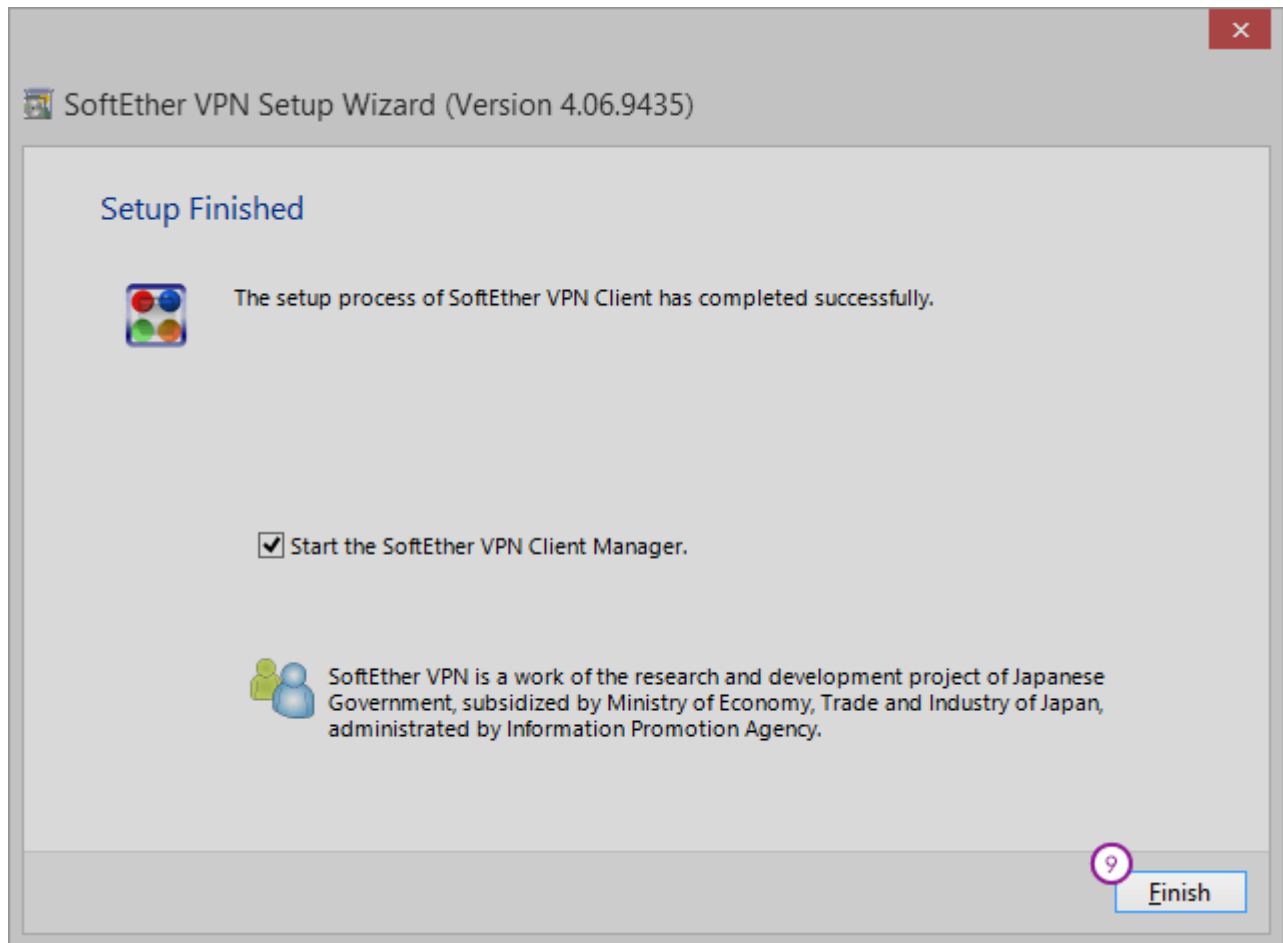
6. Choose the directory to install the software and click “Next” (7).



7. Click "Next" (8). The Installation process will start.

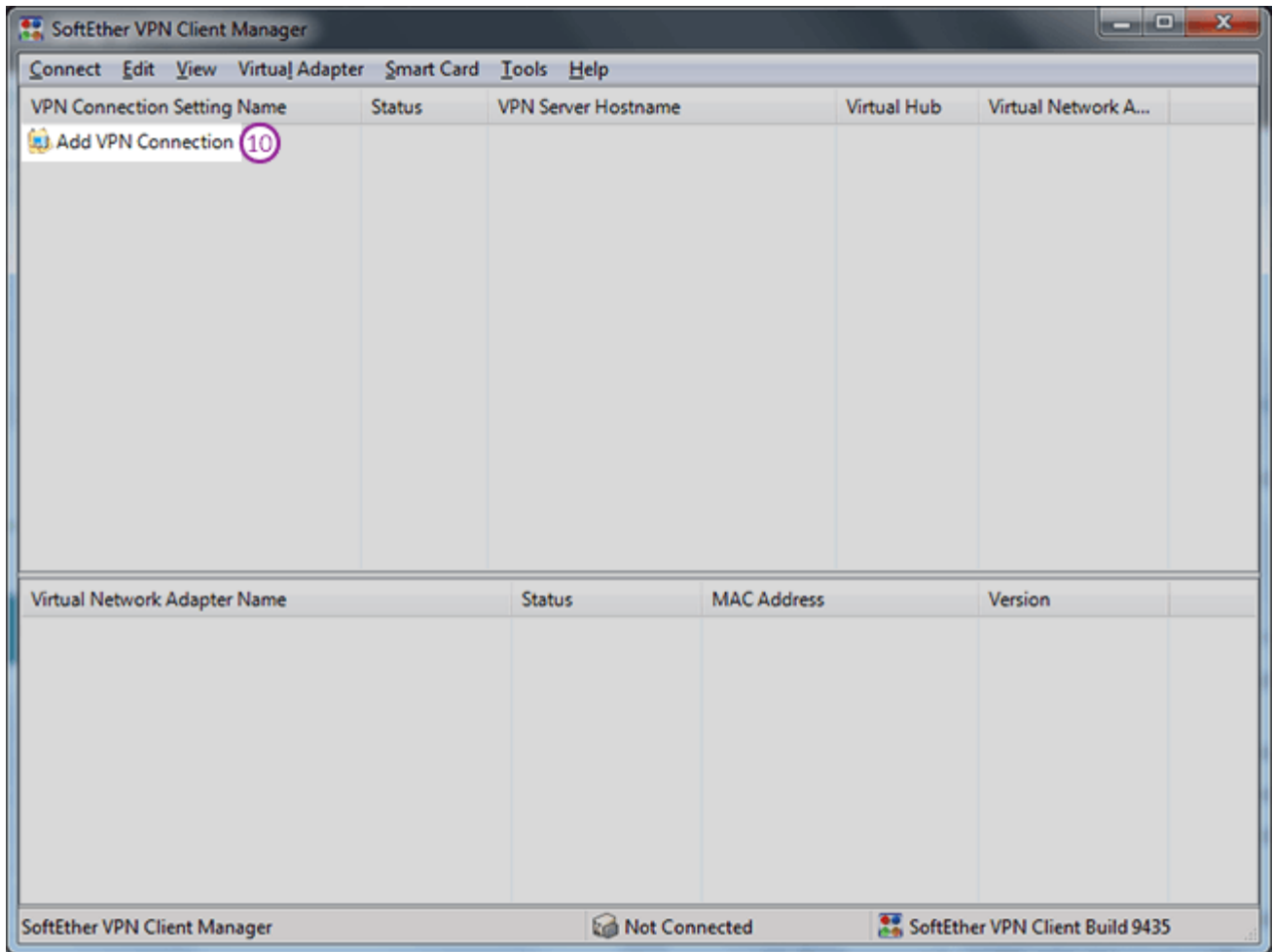


8. After the installation process is finished click “Finish” (9).

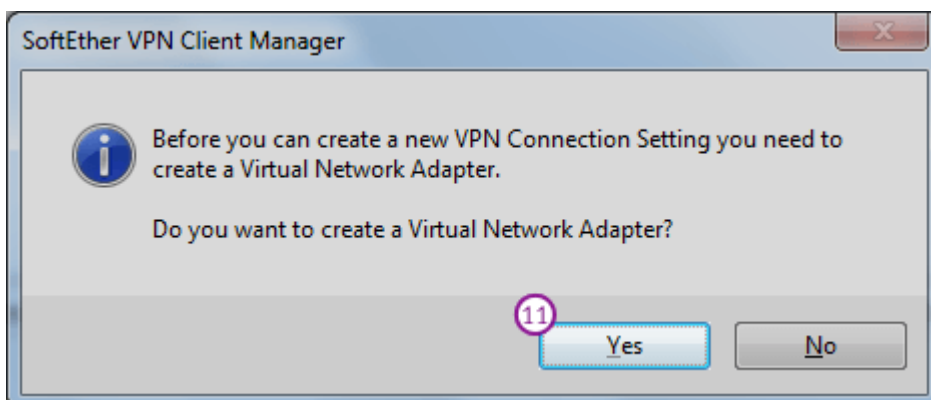


9. Launch the SoftEther VPN Client Manager.

10. In the main screen click “Add VPN connection” (10).



11. A message box will appear asking if you want to create a Virtual Network Adapter. Click “Yes” (11).





12. In the “New VPN Connection Setting Properties” window enter the following parameters:

Setting Name type (12): **KKU VPN** (or any other name you want).

Host Name (13): Add IP address of the desired server **vpn.kku.ac.th**

Port Number (14): **443**

Virtual Hub Name (15): Select **vpn** from drop down menu.

Auth Type (16): Select **Radius or NT Domain Authentication**.

Username (17): username. (kkumail account)

Password (18): password. (kkumail account)

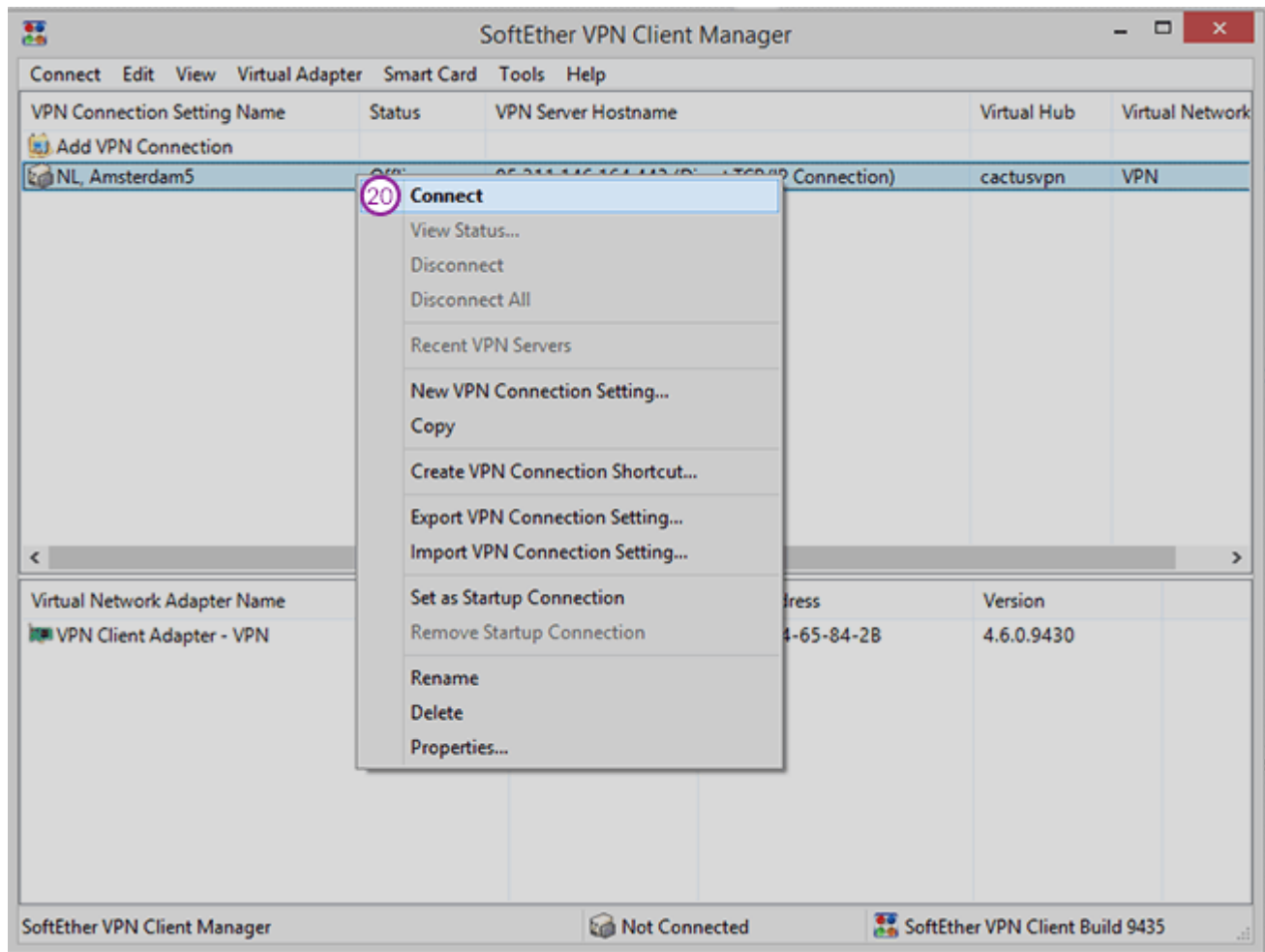
You can find them in the client area on our website, by going to your package. Make sure you use your VPN username and password and NOT the client area credentials

Click "OK" (19) to create a VPN connection.

The screenshot shows the 'New VPN Connection Setting Properties' dialog box. It is divided into several sections:

- Setting Name:** A text box containing 'KKU VPN' with a circled '12' next to it.
- Destination VPN Server:** A section with a sub-header and a description. It contains:
  - Host Name:** A text box with 'vpn.kku.ac.th' and a circled '13'.
  - Port Number:** A dropdown menu showing '443' with a circled '14' and a 'Disable NAT-T' checkbox.
  - Virtual Hub Name:** A dropdown menu showing 'vpn' with a circled '15'.
- Proxy Server as Relay:** A section with a sub-header and a description. It contains:
  - An 'Import IE Proxy Server Settings' button.
  - Proxy Type:** Radio buttons for 'Direct TCP/IP Connection (No Proxy)' (selected), 'Connect via HTTP Proxy Server', and 'Connect via SOCKS Proxy Server'.
  - A 'Proxy Server Setting' button.
- Server Certificate Verification Options:** A section with a sub-header and a description. It contains:
  - An 'Always Verify Server Certificate' checkbox.
  - A 'Manage Trusted CA Certificate List' button.
  - 'Specify Individual Cert' and 'Show Individual Cert' buttons.
- Virtual Network Adapter to Use:** A list box containing 'VPN Client Adapter - VPN'.
- User Authentication Setting:** A section with a sub-header and a description. It contains:
  - Auth Type:** A dropdown menu showing 'RADIUS or NT Domain Authentication' with a circled '16'.
  - User Name:** A text box with a circled '17'.
  - Password:** A text box with a circled '18'.
- Advanced Setting of Communication:** A section with a sub-header and a description. It contains:
  - A checked 'Reconnects Automatically After Disconnected' checkbox with a gear icon. Below it are 'Reconnect Count' (text box) and 'Reconnect Interval' (text box with '15' and 'seconds').
  - A checked 'Infinite Reconnects (Keep VPN Always Online)' checkbox.
  - An unchecked 'Do not use TLS 1.0' checkbox.
  - An 'Advanced Settings...' button.
- Bottom Section:** Two checkboxes: 'Hide Status and Errors Screens' and 'Hide IP Address Screens'. At the bottom right, there is an 'OK' button with a circled '19' and a 'Cancel' button.

13. To connect to VPN right click on your VPN connection and click “Connect” (20).



14. To disconnect SoftEther VPN on Windows right click on your VPN connection and click “Disconnect” (21).

